

Table Of Contents:

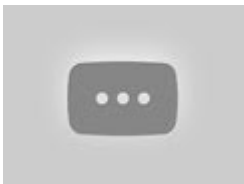
- [Common prepositions of place](#)
- [Preposition 'AT'](#)
- [Preposition 'IN'](#)
- [Preposition 'AT'](#)
- [Other prepositions of place](#)

**Prepositions of place** are used before a noun or a pronoun. They say *where* someone or something is:

- *There is a pen **in** the box.*
- *Let's meet **at** the beach.*
- *A beautiful picture is hanging **on** the wall.*

## Common prepositions of place

There are many prepositions of place with different meanings:



via <https://www.youtube.com/watch?v=-gyBjgBrj94>

To talk about place, we often use the prepositions '**in**', '**on**', and '**at**'.

### Preposition 'AT'

We use the preposition **at** to talk about the exact point where something happens:

- an exact position or particular place
- events
- place where you are to do something typical (watch a film, study, work)

- *The train arrives **at** the station at 6 o'clock.*
- *Yesterday I met Jane **at** the supermarket.*
- *Look, someone's standing **at** our door.*

- *We met yesterday **at** the concert.*

## Preposition 'IN'

We use the preposition **in** to talk about something that is inside something bigger:

- *Mary lives with her parents **in** Canada.*
- *I've been sitting **in** the library for 2 hours.*
- *There are many shops **in** the city center.*
- *This is the best team **in** the world.*

## Preposition 'AT'

We use the preposition **at** to talk about something on a surface, in line with something (like a river or road), or attached to something else:

- attached
- next to or along the side of (river)
- used to show that something is in a position above something else and touching it
- left, right
- a floor in a house
- used to show some methods of traveling
- television, radio

- *There are 8 plates **on** the table.*
- *The cars are **on** the road.*
- *He is wearing a hat **on** his head.*
- *This is my favorite program **on** TV.*

## Other prepositions of place

To describe the exact location of something compared to something else, we use precise prepositions of place. Here is a list of the most common prepositions of place with examples.

**ABOVE / OVER / ON TOP OF** → higher than something else, but not directly over it.

- *The clouds are **above** our heads.*
- *He held the umbrella **over** both of us.*
- *Your suitcase is **on top of** the wardrobe.*

**BELOW** → lower than something else.

- *You have a spot just **below** your mouth.*

**BY, NEXT TO, BESIDE, NEAR** → close in distance.

- *There's a bank **next to** the train station.*
- *There is a beautiful forest **near** our village.*

**BETWEEN** → in or into the space which separates two places, people or objects.

- *The town lies halfway **between** Rome and Florence.*

**BEHIND** → at the back (of).

- *Tom is hiding **behind** that tree.*

**IN FRONT OF** → further forward than someone or something else.

- *I can see the supermarket **in front of** me.*

**INSIDE** → within a container, place or area.

- *The pencils are **inside** the box.*

**OPPOSITE** → in a position on the other side of a specific area from; facing.

- *There is a small bakery **opposite** our house.*

**UNDER** → lower than (or covered by) something else.

- *The puppy is sitting **under** the table.*

Here's a good video from 7ESL showing the meanings of prepositions of place in pictures:

Read more about prepositions:

[Prepositions: Overview](#)

[Prepositions of Time](#)

## [Prepositions of Movement](#)